



COVID-19 Weekly Surveillance Report

Table of Contents

Summary for the week 16 January to 22 January 2023 (inclusive)	2
Hospitalisations, intensive care unit (ICU) inpatients and deaths	3
Figure 1. 7-day average of active and cleared COVID-19 cases currently in hospital or in ICU, and cumulative number of COVID-19 notifications by notification week, 03 January 2022 to 22 January 2023.	3
Table 1. Number of COVID-19 related deaths by vaccination status and age group, 16 January to 22 January 2023 and 01 January 2022 to 22 January 2023.	4
Case data	5
Figure 2. COVID-19 cases by notification week and test type, Western Australia, 03 January 2022 to 22 January 2023.	5
Figure 3. COVID-19 cases by age group and sex, Western Australia, 16 January to 22 January 2023.	6
Table 2. COVID-19 reinfections in Western Australia, 02 March 2022 to 22 January 2023.....	7
Figure 4. 7-day moving average of COVID-19 cases per 100,000 population by Australian jurisdiction, 01 December 2021 to 17 January 2023.....	7
Figure 5. 7-day moving average of COVID-19 cases per 100,000 by age group, Western Australia, 08 February 2022 to 22 January 2023.....	8
Figure 6. 7-day moving average of COVID-19 cases per 100,000 population by health region, Western Australia, 08 February 2022 to 22 January 2023.	9
Table 3. Number of COVID-19 cases and case rates per 100,000 population by region, Western Australia, 16 January to 22 January 2023 and 09 January to 15 January 2023.....	10
Figure 7 (a). Locally acquired COVID-19 weekly case rates per 100,000 population by LGA, regional Western Australia, 16 January to 22 January 2023.	11
(b) Locally acquired COVID-19 weekly case rates per 100,000 population by LGA, Perth metropolitan area, 16 January to 22 January 2023.	11
Aboriginal case summary	12
Figure 8. COVID-19 case rates per 100,000 population and rate ratio by Indigenous status and notification date, Western Australia, 08 February 2022 to 22 January 2023.	12
Testing data	13
Figure 9. The number of COVID-19 polymerase chain reaction tests and proportion test positivity by laboratory category and specimen collect week, 09 February 2020 to 22 January 2023.....	13
Appendix 1	14
Number of regional cases by postcode, 16 January – 22 January 2023	14

Summary for the week 16 January to 22 January 2023 (inclusive)

In the week of 16 January to 22 January 2023 there were:

- 3,224 COVID-19 cases reported
 - 556 with positive polymerase chain reaction (PCR) tests
 - 2,668 with positive rapid antigen tests (RAT)
 - 955 were reinfections (see definition in Table 2)
- 50 new hospital admissions and 1 new admission directly into an intensive care unit
- 25 deaths reported, aged between 47 and 96 years old
- 5,936 COVID-19 PCR tests conducted

Surveillance summary

This week, **case numbers** decreased by 33% compared to the previous week. Cases diagnosed by PCR decreased by 32% and by RAT decreased by 34%. **Reinfections** comprised 30% of total cases this week, compared with 26% last week.

There was a 19% decrease in **PCR tests** conducted compared to the previous week, with a 7-day test positive rate for PCR tests of 9.6%.

The moving seven-day average **case rates** per 100,000 population decreased in all regions. The seven-day average case rate for the Perth metropolitan area (17 cases/100,000 population) was approximately 6% higher than the Western Australia Country Health Service (WACHS) regions combined (16 cases/100,000 population).

The seven-day average **age-specific rates** decreased in all age-groups. The highest rates are in the 30 - 49 years age group (21 cases/100,000 population), and the lowest rates in the 10 – 19 years age group (9 cases/100,000 population).

Nationally, the moving seven-day average case rates decreased across all jurisdictions except the Northern Territory, which remained stable. Australian Capital Territory has the highest rate (27 cases/100,000 population) and Victoria the lowest rate (12 cases/100,000 population). The rate in Western Australia is 23 cases/100,000 population.

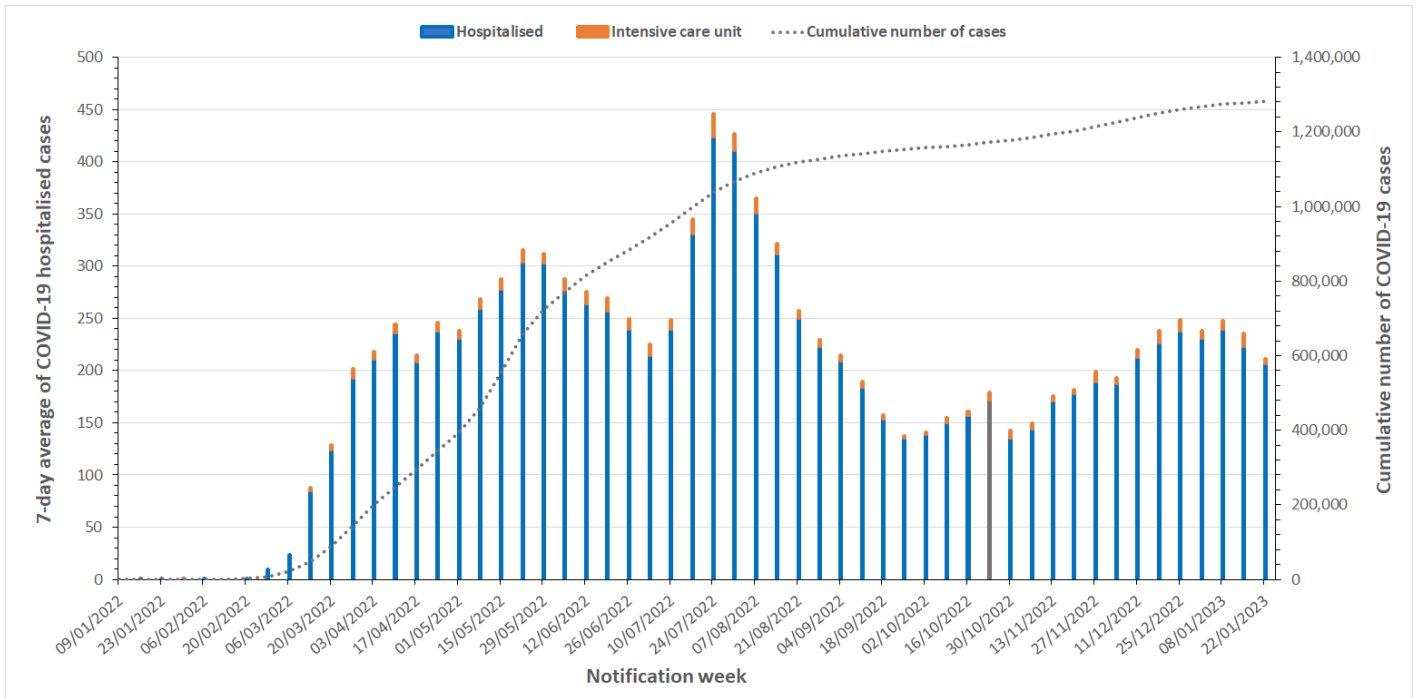
The 7-day average of **hospitalised cases** decreased by 8% from 224 last week to 206 this week. **Intensive care unit cases** decreased from 12 last week to 5 this week. **New hospital admissions** related to COVID-19 decreased by 23% from 65 last week to 50 this week, and **direct intensive care unit admissions** decreased from 3 last week to 1 this week.

Deaths decreased by 14% this reporting week with 25 deaths compared to 29 last week.

This week, 140 cases were reported in the **Aboriginal population**, a 55% decrease compared to last week. Case rates in the Aboriginal population are higher than the non-Aboriginal population, with a 7-day average rate ratio of 1.1 this reporting week. Four deaths were reported in the Aboriginal population this week.

Hospitalisations, intensive care unit (ICU) inpatients and deaths

Figure 1. 7-day average of active and cleared COVID-19 cases currently in hospital or in ICU, and cumulative number of COVID-19 notifications by notification week, 03 January 2022 to 22 January 2023.



Notes

Data sourced from Western Australia Department of Health dataset

Notification week refers to data for Monday to Sunday

'Hospitalised' relates to active and cleared COVID-19 cases that are current hospital inpatients. The reason for admission may be unrelated to COVID-19 for some people

'Intensive care unit' (ICU) is a subset of hospitalised and relates to active/cleared COVID-19 cases that are currently in an ICU

The definition of COVID-19 related hospitalisation was updated on 21 October 2022 to exclude cases where more than 60 days have passed since their positive COVID-19 test. This new definition more accurately captures cases in whom COVID-19 may have contributed to their reason for ongoing hospitalisation. Data reported after 21 October cannot be compared directly to data recorded prior to that date.

Table 1. Number of COVID-19 related deaths by vaccination status and age group, 16 January to 22 January 2023 and 01 January 2022 to 22 January 2023.

	Current report week	Year 2022 to date
	Week 16 Jan – 22 Jan 2023	1 Jan 2022 – 22 Jan 2023
Number of COVID-19 vaccine doses	Deaths (n= 25)	Deaths (n= 890)
0	5 (20.0%)	161 (18.1%)
1	1 (4.0%)	28 (3.1%)
2	1 (4.0%)	98 (11.0%)
3+	18 (72.0%)	603 (67.8%)
Age group (years)		
0-9	0 (0%)	0 (0%)
10-19	0 (0%)	2 (0.2%)
20-29	0 (0%)	0 (0%)
30-39	0 (0%)	5 (0.6%)
40-49	1 (4.0%)	10 (1.1%)
50-59	2 (8.0%)	28 (3.1%)
60-69	1 (4.0%)	62 (7.0%)
70-79	5 (20.0%)	169 (19.0%)
80-89	12 (48.0%)	339 (38.1%)
90+	4 (16.0%)	275 (30.9%)

Notes

Data sourced from Western Australia Department of Health dataset

Number of vaccination doses sourced from Australian Immunisation Register. Vaccination data are available for WA residents only, therefore, the number of unvaccinated individuals (0 doses) may be overestimated

A high proportion of the WA population (16 years and above) is fully vaccinated against COVID-19 (as of 13th January 2023 – 84.2% for 3+ doses, >95% for 2 doses), therefore interpretation of people whom have died with both 3+ and 2 doses requires consideration within this context.

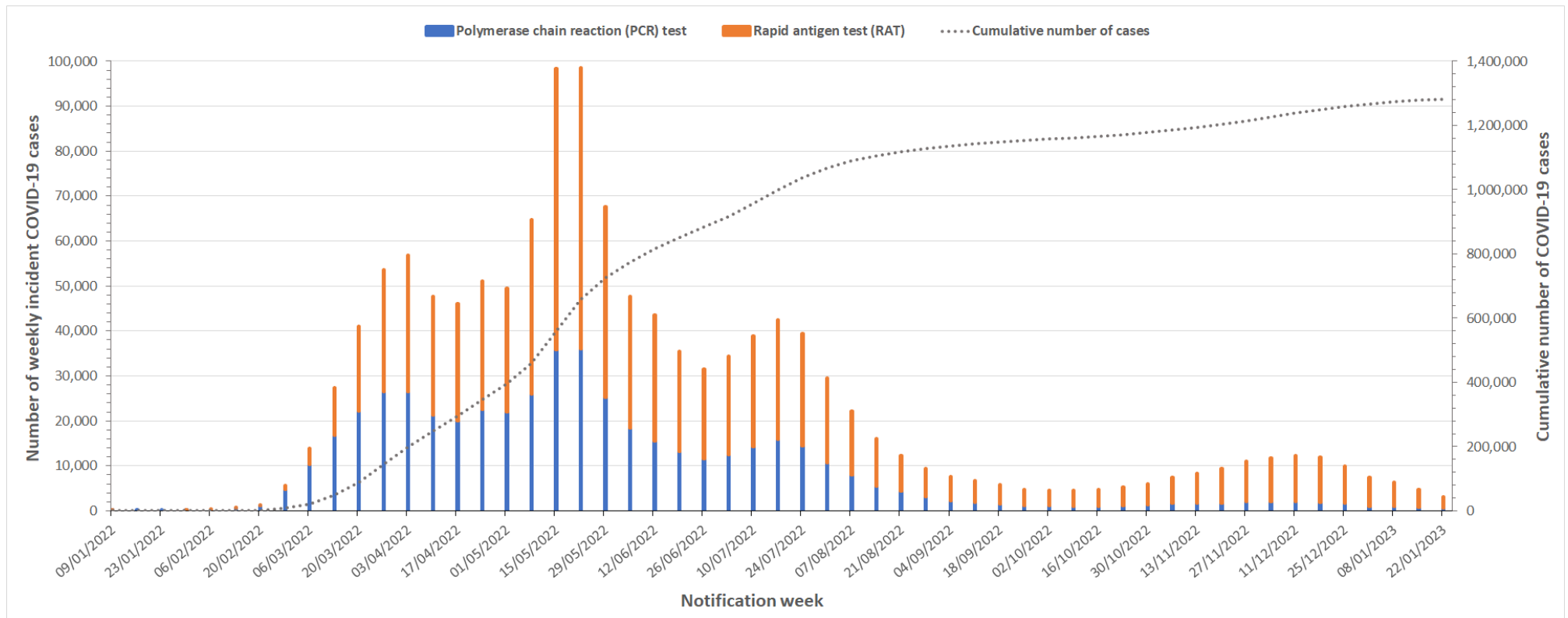
Deaths are counted by notification date and may include historical deaths that occurred (i.e. date of death) prior to the current report week

11 previously reported deaths were re-classified as non-COVID-related since most recent surveillance report

Deaths are not necessarily associated with hospital and/or ICU admissions

Case data

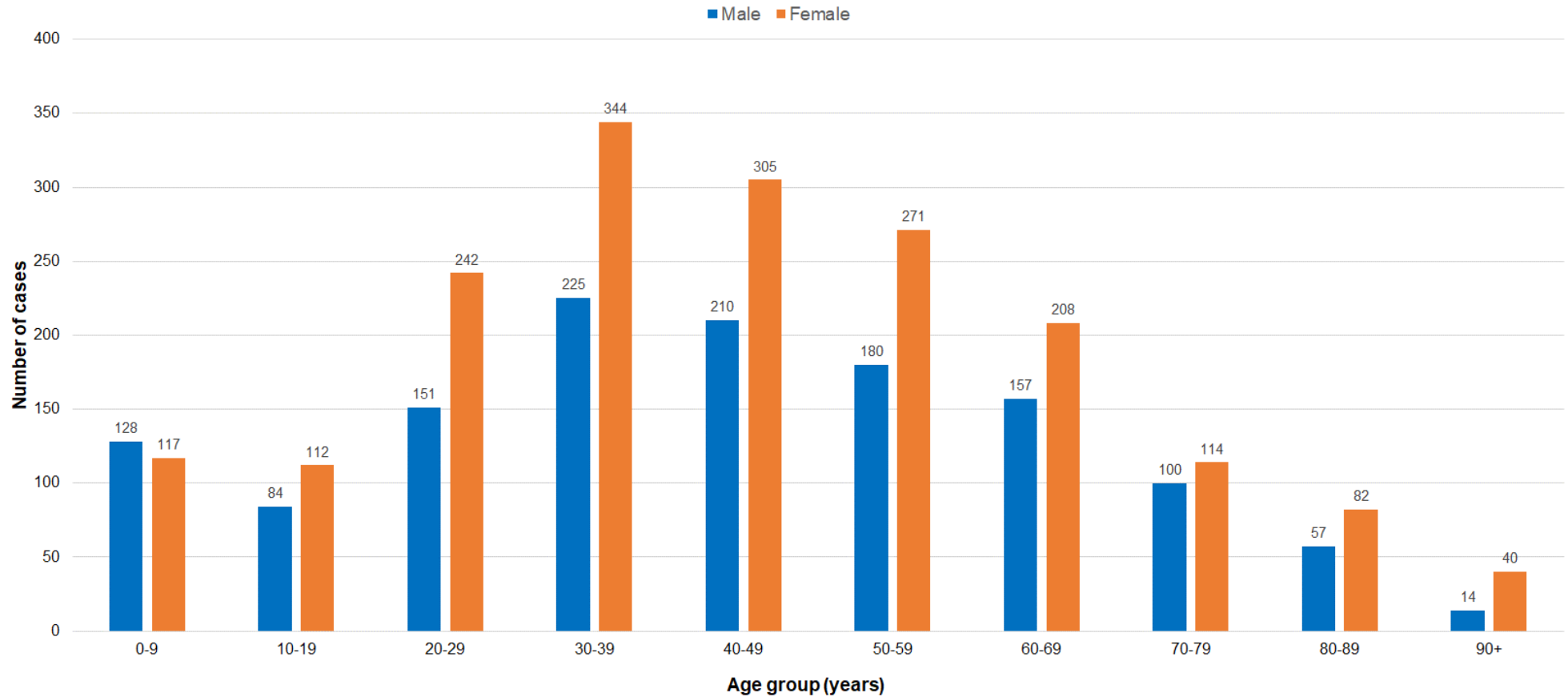
Figure 2. COVID-19 cases by notification week and test type, Western Australia, 03 January 2022 to 22 January 2023.



Notes

Data sourced from Western Australia Department of Health dataset
 Notification week refers to data for Monday to Sunday

Figure 3. COVID-19 cases by age group and sex, Western Australia, 16 January to 22 January 2023.



Notes

Data sourced from Western Australia Department of Health dataset

Sex data is partially incomplete due to the unavailability of this variable during rapid antigen test registration, resulting in a discrepancy to total case numbers reported for the week.

- Males: n=1,306 (41.6%) Females: n=1,835 (58.4%)
- Median age = 42 years; range: 0 to 98 years

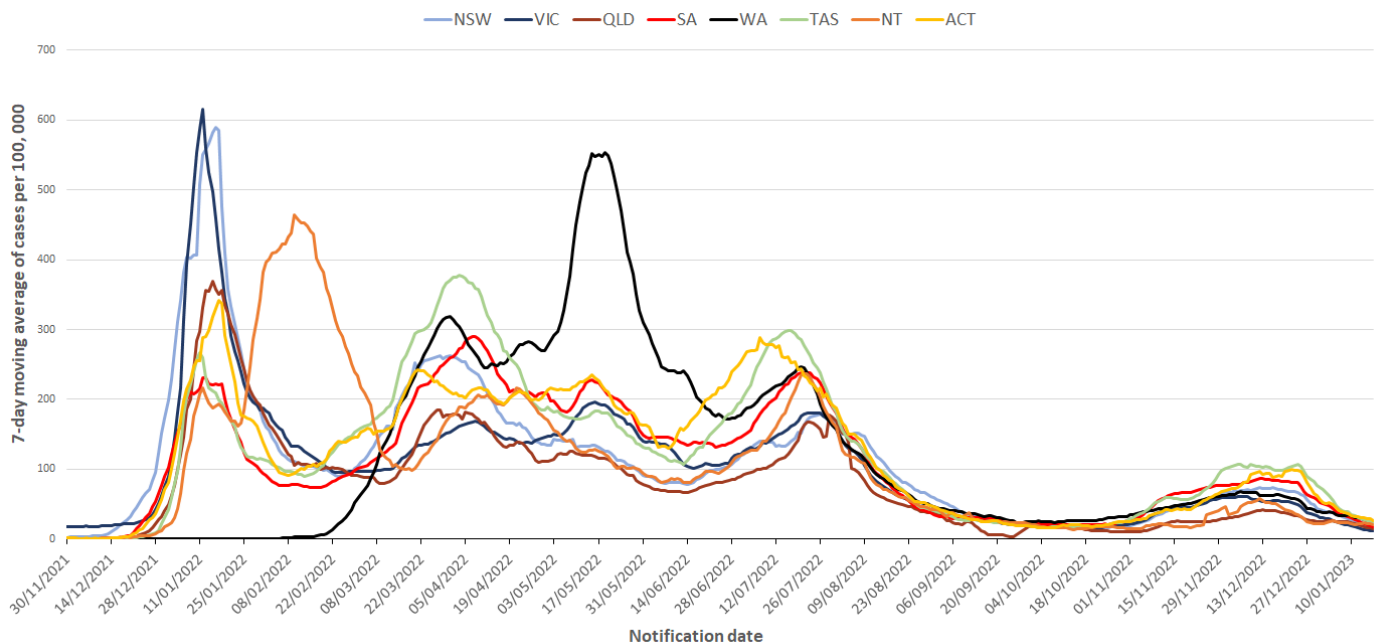
Table 2. COVID-19 reinfections in Western Australia, 02 March 2022 to 22 January 2023.

Month	Number of reinfections *
Mar-2022	14
Apr-2022	29
May-2022	105
Jun-2022	846
Jul-2022	5,041
Aug-2022	5,700
Sep-2022	4,025
Oct-2022	2,969
Nov-2022	7,026
Dec-2022	11,007
Jan-2023[^]	4,289
Total	41,051

* Reinfection definition as per Series of National Guidelines (SoNG) published by the Communicable Disease Network Australia (CDNA): between 2nd March 2022 and 8th July 2022, COVID-19 reinfections were defined as a positive COVID-19 test that occurred more than 12 weeks after an initial infection. From 9 July 2022 to date, COVID-19 reinfections are defined as a positive COVID-19 test occurring 28 days after previously recovering from the virus

[^] Data up to 22nd January 2023 inclusive

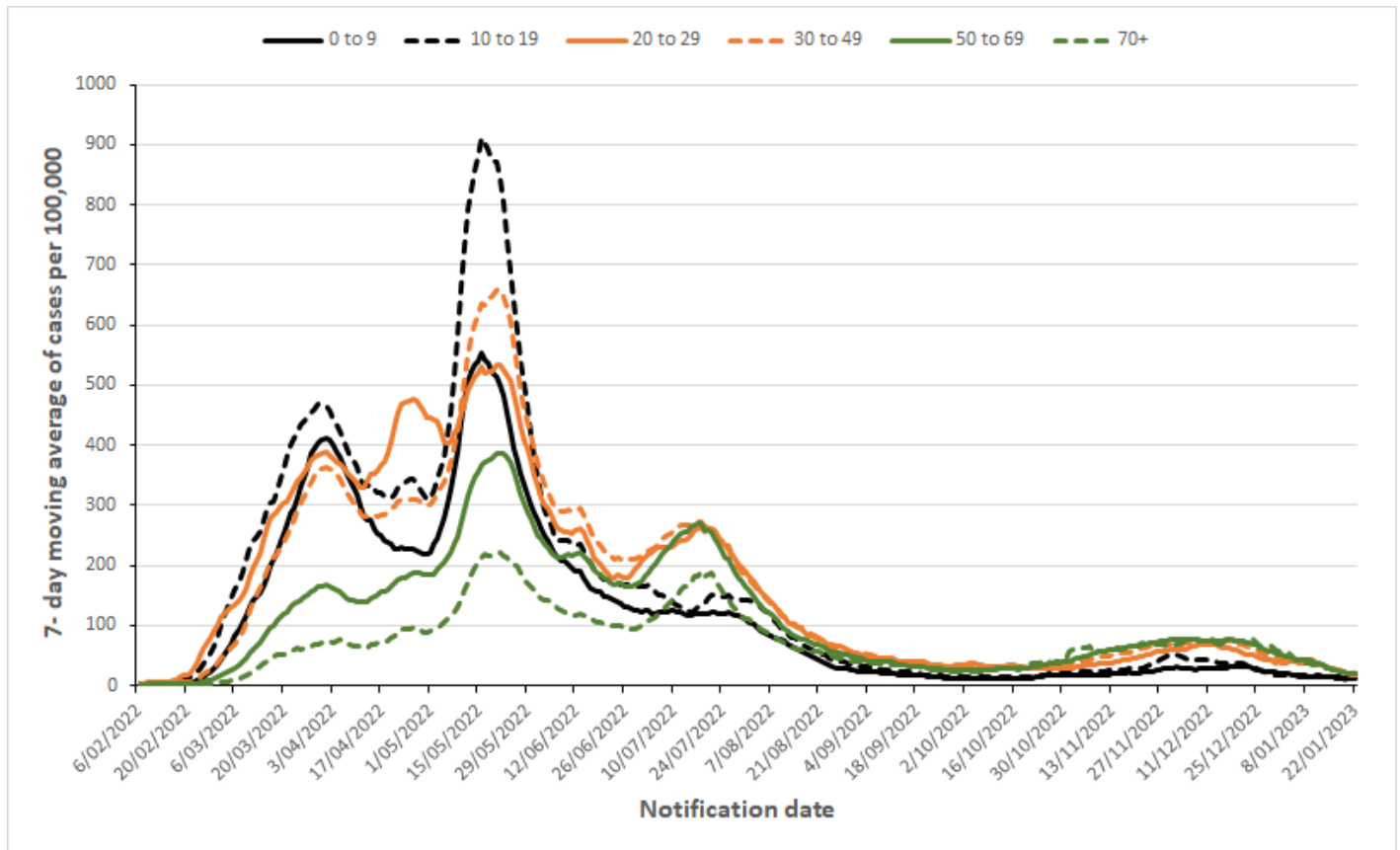
Figure 4. 7-day moving average of COVID-19 cases per 100,000 population by Australian jurisdiction, 01 December 2021 to 17 January 2023.



Notes

Data sourced from the respective jurisdictional health department datasets
 Notification date refers to data collected up to the end of the 24-hour reporting period
 Population denominators are sourced from Australian Bureau of Statistics December 2020 estimates.

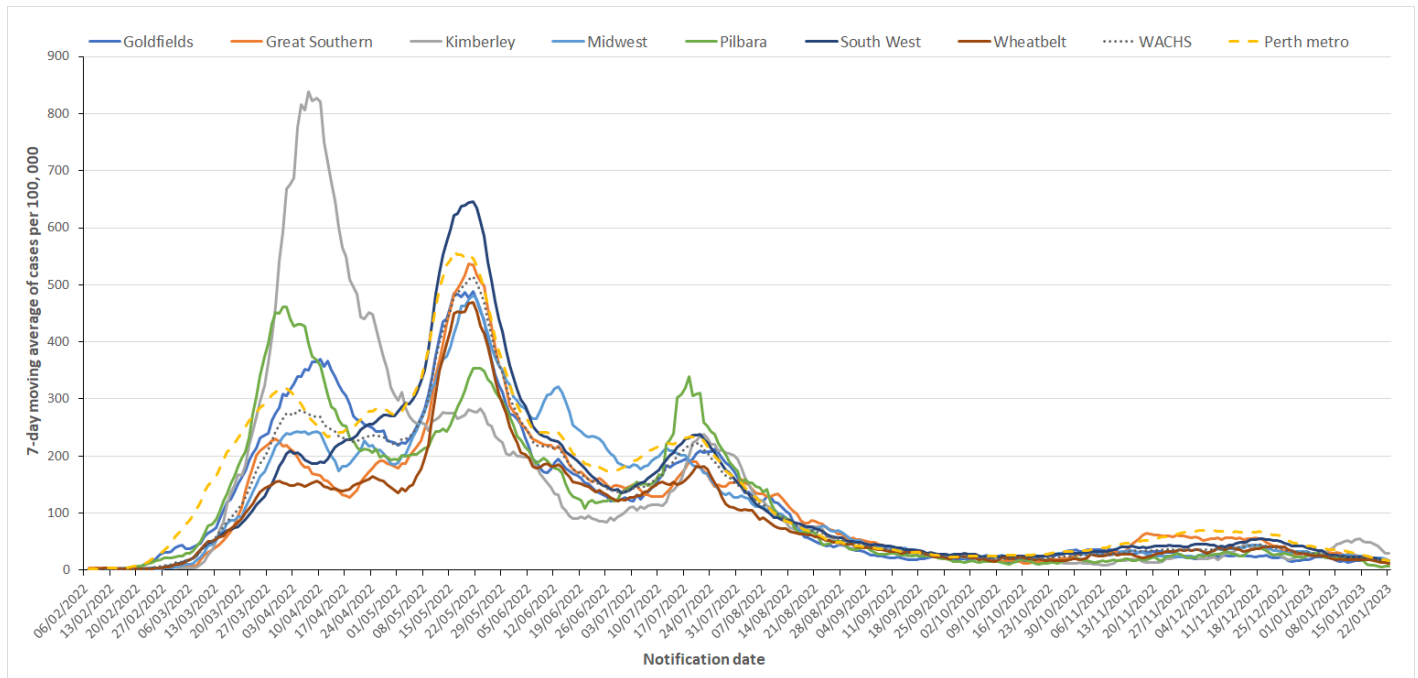
Figure 5. 7-day moving average of COVID-19 cases per 100,000 by age group, Western Australia, 08 February 2022 to 22 January 2023.



Notes

Data sourced from Western Australia Department of Health dataset
 Notification date refers to data collected up to the end of the 24-hour reporting period
 Case data includes those determined by both polymerase chain reaction (PCR) tests and rapid antigen tests (RAT)
 Population denominator sourced from Australian Bureau of Statistics June 2021 estimates.

Figure 6. 7-day moving average of COVID-19 cases per 100,000 population by health region, Western Australia, 08 February 2022 to 22 January 2023.



Notes

Data sourced from Western Australia Department of Health dataset
 Notification date refers to data collected up to the end of the 24-hour reporting period
 Case data is by place of usual residence for positive case (due to unavailability of data for specific location of acquisition)
 Case data includes those determined by both polymerase chain reaction (PCR) tests and rapid antigen tests (RAT)
 Western Australia Country Health Service (WACHS) includes Goldfields, Great Southern, Kimberley, Midwest, Pilbara, South West and Wheatbelt health regions combined
 Perth metropolitan region includes East Metropolitan Health Service, North Metropolitan Health Service and South Metropolitan Health Service combined
 Population denominator sourced from Australian Bureau of Statistics 2020 estimates.

Table 3. Number of COVID-19 cases and case rates per 100,000 population by region, Western Australia, 16 January to 22 January 2023 and 09 January to 15 January 2023.

	Region	Current report week		Previous report week	
		Week 16 January to 22 January 2023		Week 09 January to 15 January 2023	
		Number for current week	Rates for current week (cases/100,000 pop)	Number for previous week	Rates for previous week (cases/100,000 pop)
WACHS Regions	Goldfields	64	119	70	130
	Great Southern	74	121	106	173
	Kimberley	73	202	126	349
	Midwest	76	122	109	176
	Pilbara	31	49	56	89
	South West	214	118	289	159
	Wheatbelt	63	83	102	134
WACHS total*		595	111	858	161
Other**		28	-	64	-
Perth Metropolitan region		2,601	122	3,909	184
Total		3,224	121	4,831	181

Notes

Data sourced from Western Australia Department of Health dataset

Notification date refers to data collected up to the end of the 24-hour reporting period

Case data is by place of usual residence for positive case (due to unavailability of data for specific location of acquisition)

Case data includes COVID-19 cases diagnosed by either polymerase chain reaction (PCR) tests and/or rapid antigen tests (RAT)

*Western Australia Country Health Service (WACHS) includes Goldfields, Great Southern, Kimberley, Midwest, Pilbara, South West and Wheatbelt public health regions combined

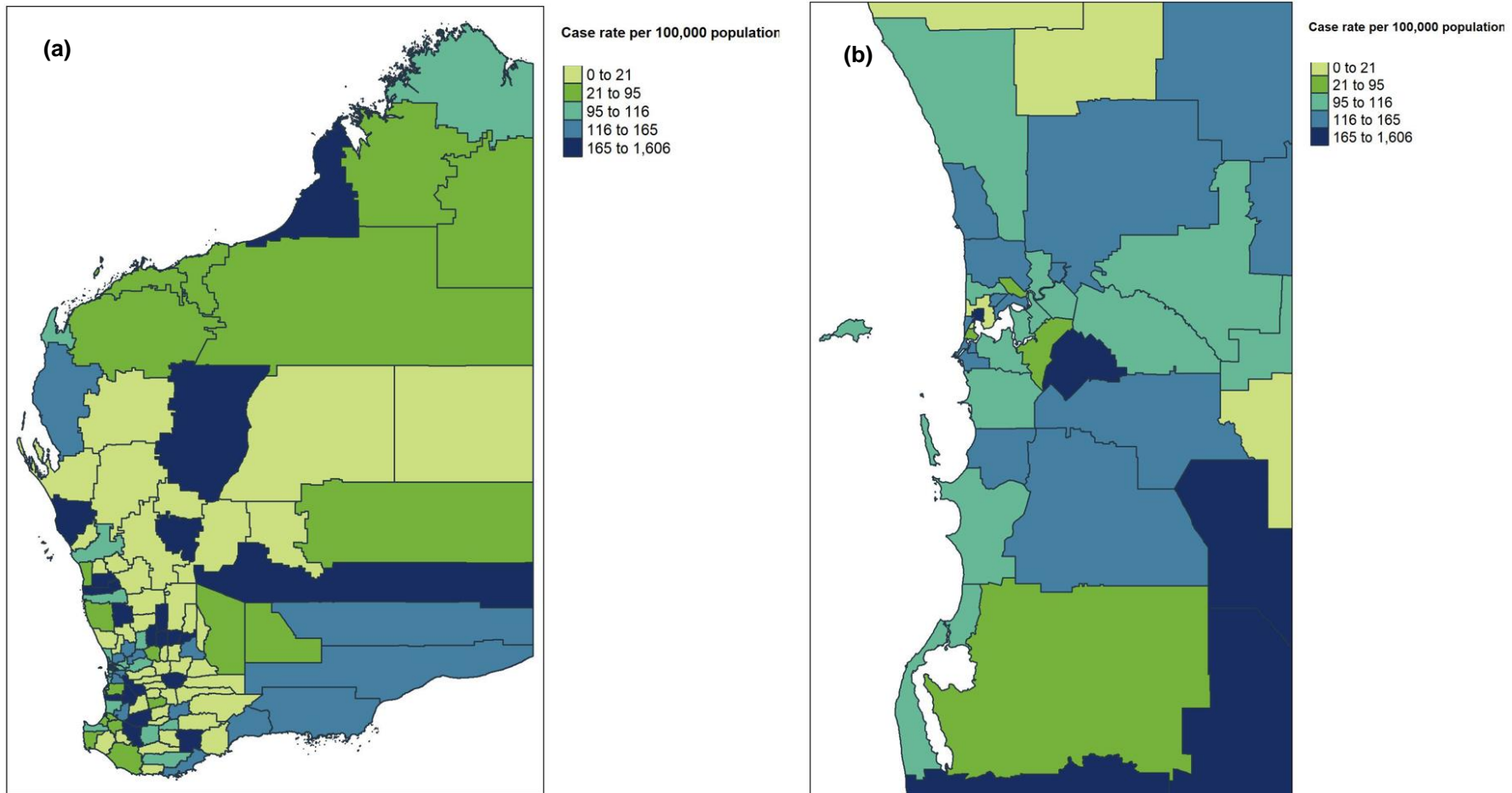
Perth Metropolitan region includes East Metropolitan Health Service, North Metropolitan Health Service and South Metropolitan Health Service combined

**Other includes cases with overseas and interstate residential addresses, and cases without residential address information

Population denominator is sourced from Australian Bureau of Statistics 2020 estimates.

Figure 7 (a). Locally acquired COVID-19 weekly case rates per 100,000 population by LGA, regional Western Australia, 16 January to 22 January 2023.

(b) Locally acquired COVID-19 weekly case rates per 100,000 population by LGA, Perth metropolitan area, 16 January to 22 January 2023.

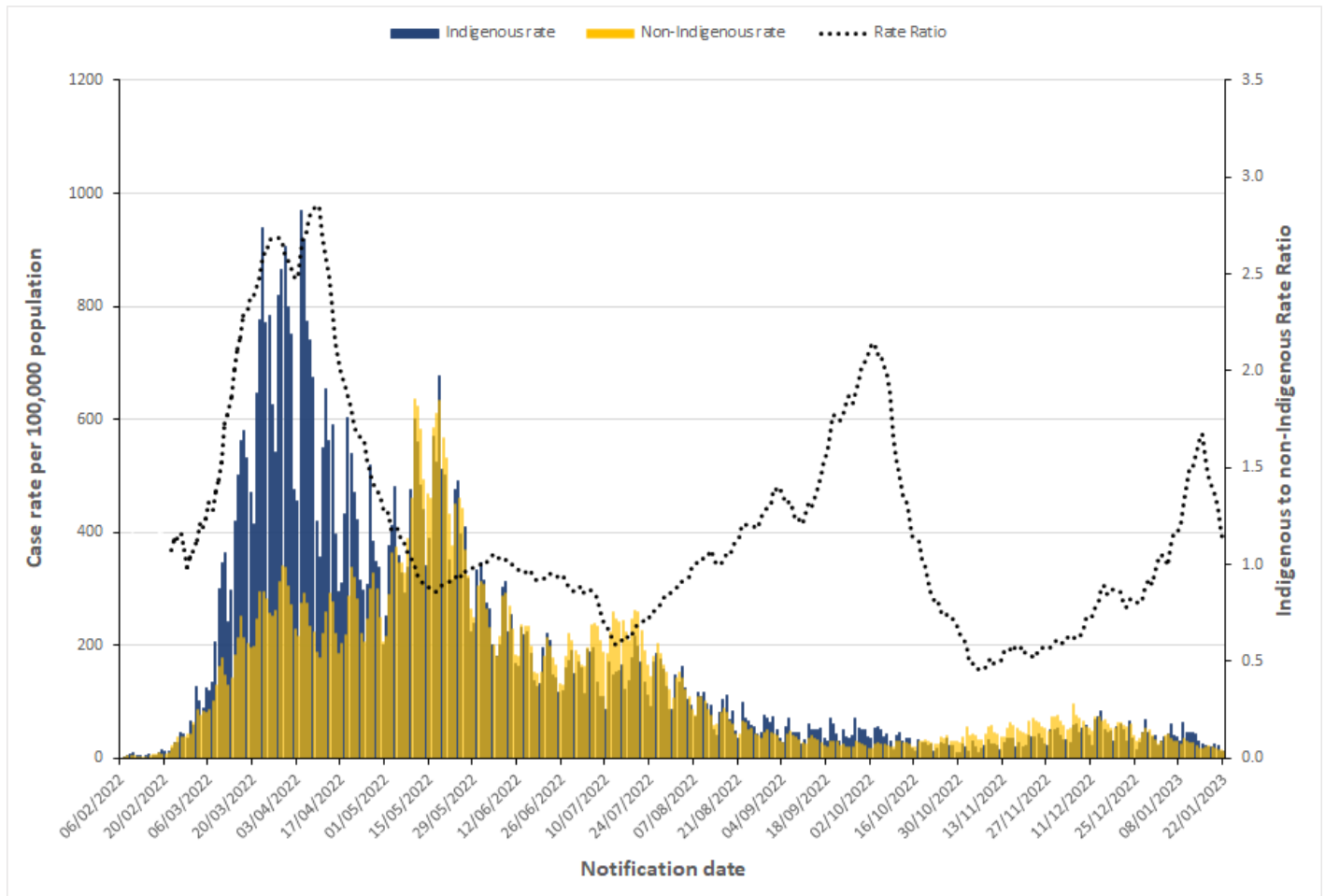


Notes

Data sourced from Western Australia Department of Health dataset
Notification date refers to data collected up to the end of the 24-hour reporting period
Cases are represented on the map according to their place of usual residence (no information for specific location of acquisition)
Cases include those detected by either polymerase chain reaction (PCR) tests or rapid antigen tests (RAT)
Areas on the map are defined by Local Government Area (LGA) boundaries
Population denominator is sourced from Australian Bureau of Statistics 2020 estimates.

Aboriginal case summary

Figure 8. COVID-19 case rates per 100,000 population and rate ratio by Indigenous status and notification date, Western Australia, 08 February 2022 to 22 January 2023.



Notes

Data sourced from Western Australia Department of Health dataset

Notification date refers to data collected up to the end of the 24-hour reporting period

Indigenous status is defined as those who identify as 'Aboriginal and Torres Strait Islander (TSI) origin'/'Aboriginal but not TSI origin'/'TSI but not Aboriginal origin'

Cases where Indigenous status was not stated were designated as non-Indigenous

Cases include those detected by both polymerase chain reaction (PCR) tests and rapid antigen tests (RAT)

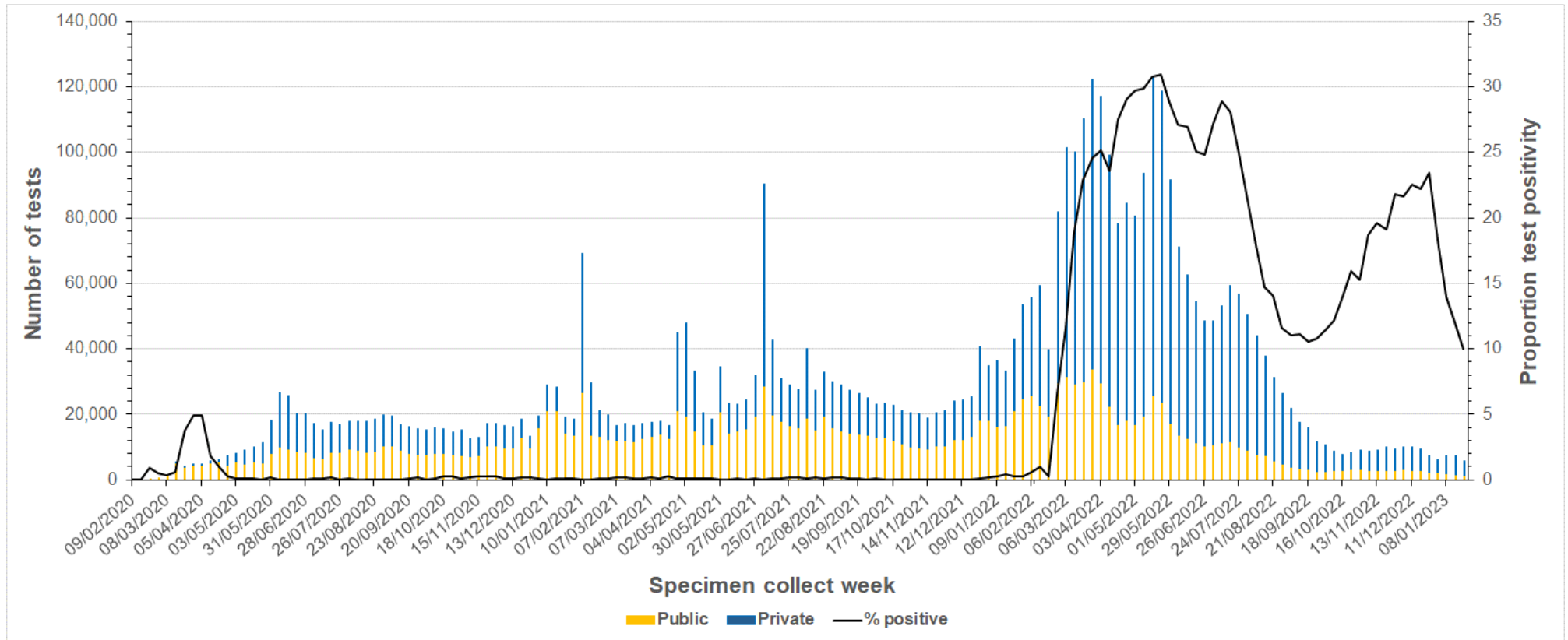
Population denominator data were sourced from Australian Bureau of Statistics 2020 estimates

Rate ratio is calculated by dividing the Indigenous rate by the non-Indigenous rate, with a 7-day average of the respective rate ratios applied to smooth the trend

Rate ratio is only plotted from 22nd February 2022 as prior to this, case numbers were too low.

Testing data

Figure 9. The number of COVID-19 polymerase chain reaction tests and proportion test positivity by laboratory category and specimen collect week, 09 February 2020 to 22 January 2023.



Notes

Data sourced from Western Australian public and private pathology laboratories

Specimen collect week refers to specimens collected between Monday to Sunday

Number of tests includes both positive and negative tests

From 01 October 2023, testing at private pathology providers required a referral from a GP

Appendix 1

Number of regional cases by postcode, 16 January – 22 January 2023

WACHS Regions	Postcode	Week 16 Jan to 22 Jan 2023	WACHS Regions	Postcode	Week 16 Jan to 22 Jan 2023	WACHS Regions	Postcode	Week 16 Jan to 22 Jan 2023
Goldfields	6430	29	Midwest (continued)	6532	11	South West (continued)	6285	9
	6431	<5		6630	<5		6286	<5
	6432	9		6638	<5		6288	<5
	6436	<5		6642	<5		6290	<5
	6440	<5		6701	7		6398	<5
	6442	<5		6707	<5		Wheatbelt	6041
	6443	<5	Pilbara	6714	15	6302		<5
	6444	<5		6718	<5	6308		<5
6450	18	6721		<5	6312	<5		
Great Southern	6317	<5		6722	<5	6315		<5
	6323	<5		6751	<5	6350		<5
	6324	<5		6753	5	6375		<5
	6326	<5		6762	<5	6390		<5
	6330	55		South West	6218	<5	6391	<5
	6333	<5	6219		<5	6401	9	
	6337	<5	6220		5	6407	<5	
	6338	<5	6225		12	6413	<5	
	6348	<5	6226		<5	6415	<5	
	6395	<5	6228		<5	6426	<5	
Kimberley	6725	51	6229		<5	6460	<5	
	6726	5	6230		89	6461	<5	
	6728	<5	6232		12	6475	<5	
	6740	<5	6233		24	6485	<5	
	6743	9	6239	<5	6489	<5		
	6765	<5	6254	<5	6490	<5		
	6770	<5	6255	<5	6510	6		
	Midwest	6515	<5	6260	<5	6516	<5	
6517		<5	6271	<5	6562	5		
6519		<5	6280	28	6566	<5		
6525		<5	6281	11	6567	<5		
6530		45	6282	<5				

Notes

Data sourced from Western Australia Department of Health dataset

Exact number of cases less than 5 not reported for confidentiality

Notification date refers to data collected up to the end of the 24-hour reporting period

Case data is based on the residential postcode of each case. The case may have an isolation address based in another regional postcode.

Case data includes those determined by both polymerase chain reaction (PCR) tests and rapid antigen tests (RAT)

*Western Australia Country Health Service (WACHS) includes Goldfields, Great Southern, Kimberley, Midwest, Pilbara, South West and Wheatbelt public health regions

This document can be made available in alternative formats on request for a person with disability.

© Department of Health 2023

Copyright to this material is vested in the State of Western Australia unless otherwise indicated. Apart from any fair dealing for the purposes of private study, research, criticism or review, as permitted under the provisions of the *Copyright Act 1968*, no part may be reproduced or re-used for any purposes whatsoever without written permission of the State of Western Australia.

health.wa.gov.au